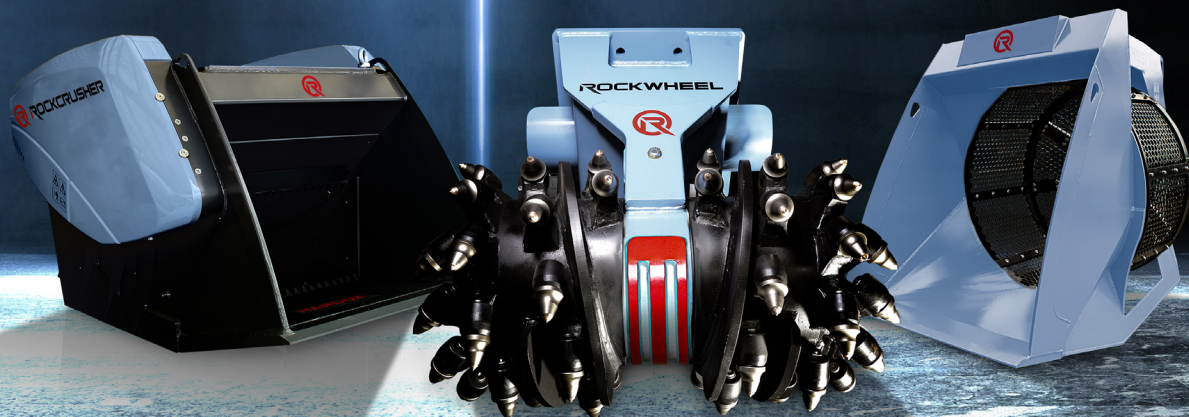




ROCKCRUSHER

BY  ROCK.ZONE



READY TO ROCK

IN THE  **ROCK.ZONE**

PROFESSIONAL
ATTACHMENTS,
THAT INSPIRE!

Crusher Bucket
key benefit: Quattro Movement
& Reverse Function

Drum Cutter
key benefit: Motor protection
& three to five times faster

Screening Bucket
key benefit: XXL Volume
& maintenance-free extra
large gearbox



Efficient and innovative since 2013

Robert Piasecki and his team provide exactly what the customers want and when they want it!

The product line includes over 30 machines in the drum cutter, crushing and screening bucket segment.

Since the Hartl Crusher takeover we are living the ROCK.ZONE!





APPLICATIONS

Mobile and flexible.

CRUSH THE PROBLEM

The Rockcrusher works in just the simplest way you can imagine. The material fed to it can be broken down to around one-sixth of its size. To get smaller material, you just repeat the crushing process.

The final size is determined by the user, by means of adjusting a variable gap.

REUSABLE BACKFILL MATERIAL

The on-site crushed material can be used for backfill without further processing. The cube-shaped end product will solidify the soil with less risk of unwanted bumps or sinkholes.

MATERIAL

- **Concrete**
- **Glass and ceramic**
- **Natural Rock**
- **Mixed inert material**
- **Asphalt**
- **Brick**





DEMOLITION

RECYCLING

EXCAVATION

INFRASTRUCTURE

QUARRYING

NATURAL ROCK

- **on-site crushing**
- **no disposal costs**
- **no transportation costs**
- **low operation costs**
- **1 EUR per crushed ton**

- **cube-shaped end product**
- **work in restricted areas**
- **working along the track**
- **works in tighter space**
- **resusable backfill material**



ADVANTAGES

Unrivalled. Higher throughput.

QUATTRO MOVEMENT

The unique crushing movement guarantees higher throughput, increased cube-shaped end product, limited flakes and fines, and reduced wear on the jaw plates.

- **pre-crushing in the upper part of the crushing chamber**
- **high throughput capacity**
- **less friction = less wear**
- **30% more cube-shaped end product**

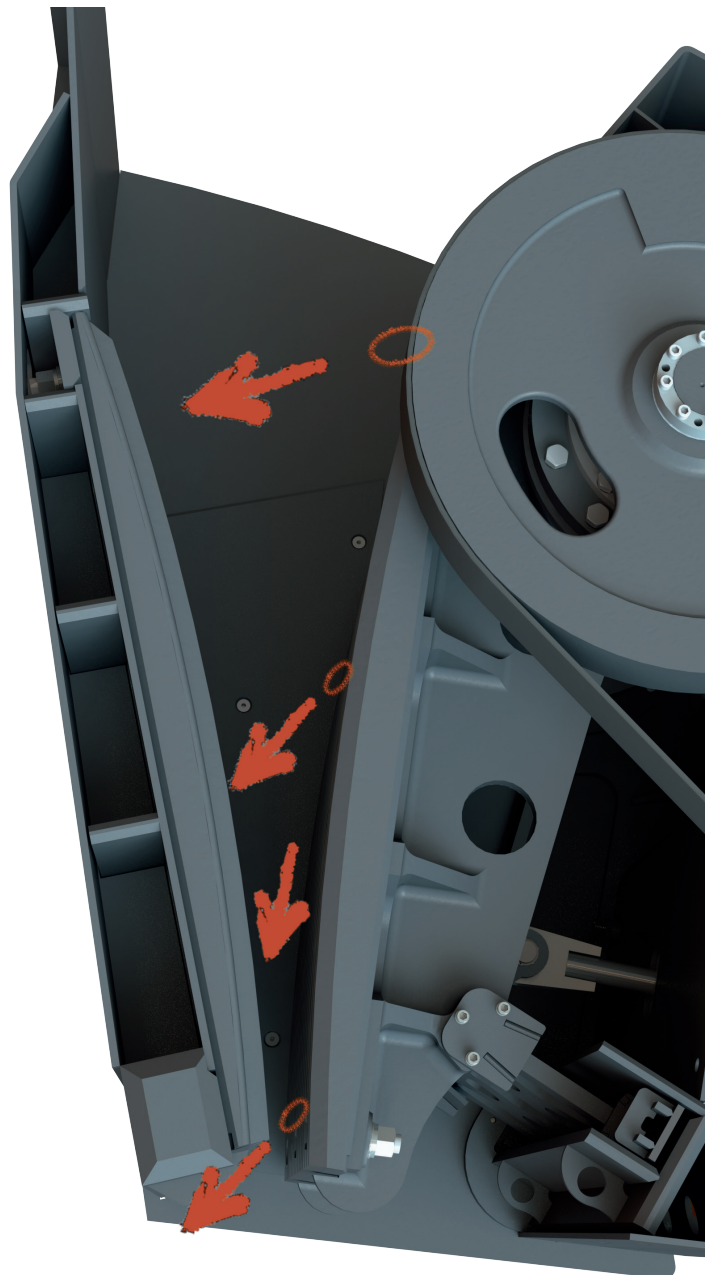
THE UNIQUE WAY OF WORKING

The upper part of the crushing chamber enables a pre-crushing of the material.

It allows a greater amount of material to be loaded.

The pre-crushed material pushes down into the middle part of the crushing chamber enabling secondary crushing and an optimal material flow with high throughput capacity.

The lower part of the crusher shapes the material into a cube-shaped end product.





THAT ROCKS!



QUATTRO MOVEMENT

- higher throughput
- increased cubical shaped
- limited flakes and fines
- reduced wear on jaw plates
- Even round material
e.g. river rock can be
crushed efficiently





REVERSE
CRUSHING FUNCTION

←
CRUSH

→
REVERSE

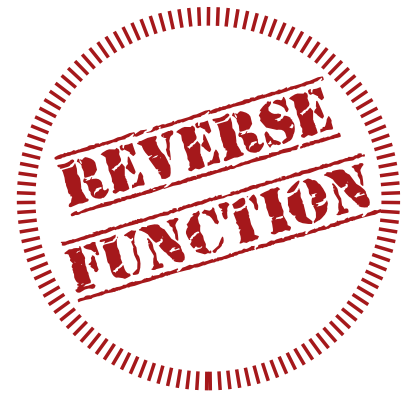
ADVANTAGES

Unique. Superior technology.

REVERSE FUNCTION

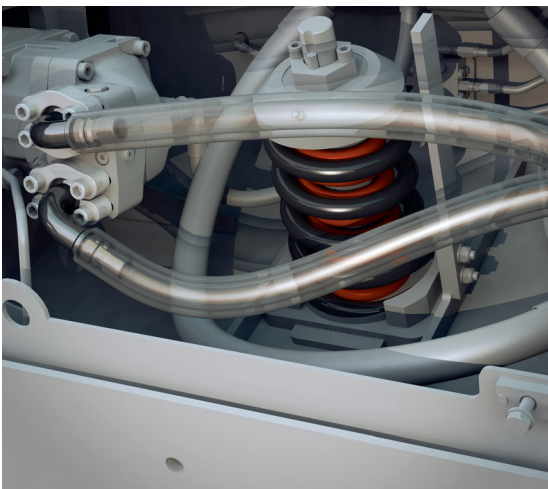
Jammed material is easily ejected by reversing the crusher movement.
At the flick of a switch!

- **crushing with no interruption**
- **no more smashing the bucket against the ground**
- **no extra emptying of the bucket**
- **increased productivity**



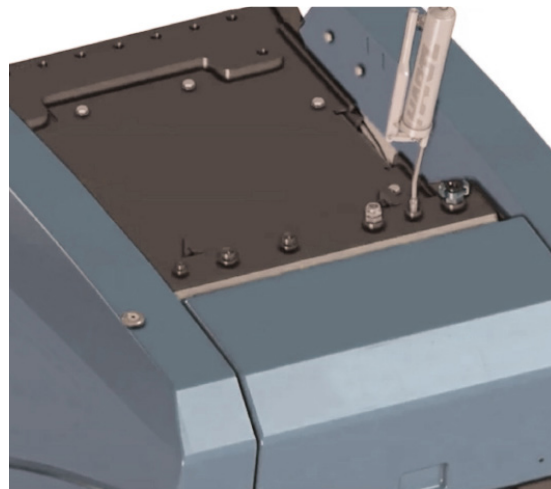
DOUBLE SPRING

Rockcrusher double spring system reduces the potential for spring malfunction while stabilizing the toggle plate and buffering the movement of the jaw plates.



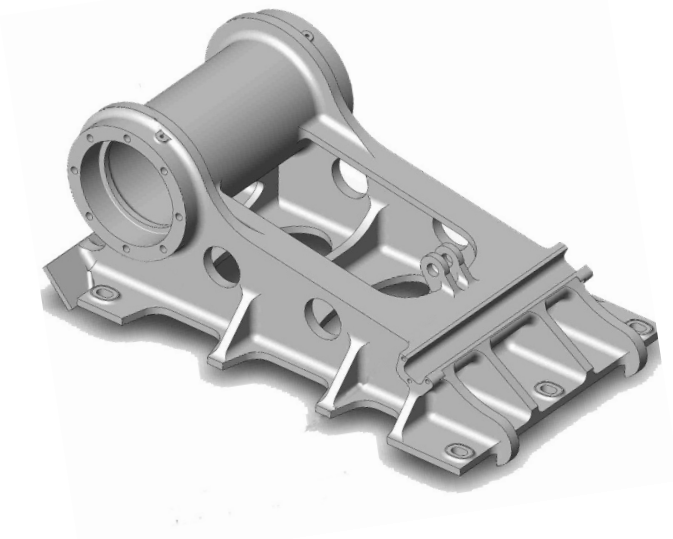
CENTRAL LUBRICATION

Casted in one piece, the jawstock provides a robust base for the crusher, ensuring mechanical resilience and stability.



ROBUST JAWSTOCK

Casted in one piece, the jawstock provides a robust base for the crusher, ensuring mechanical resilience and stability.



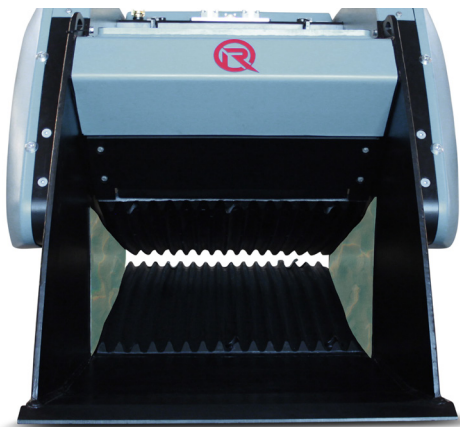
COVER PROTECTION

The side protection protects the frame from damage.



WEAR PLATES

The Rockcrusher has replaceable cheek plates to help avoid wear on the frame structure.



OPTIONS

Water Spray Bar:

Integrated spraying system for dust suppressions.

Camera:

Camera and monitor for live monitoring of the crusher chamber.

Magnet:

For Sorting metals after crushing mixed material such as reinforced concrete.

THAT ROCKS!



NEWEST TECHNOLOGIES

- Quattro Movement
unique movement enables cube-shaped end product
- Reverse Function
efficiently removes jammed material

HIGH DURABILITY

- most robust design on the market
- replaceable wear parts

THE BEST PRICE-PERFORMANCE RATIO

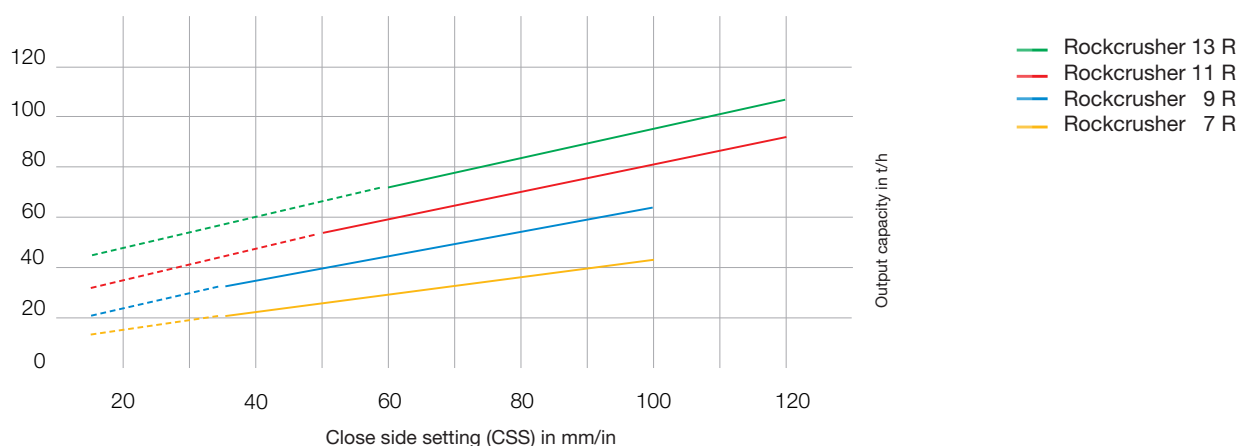
- low investment - ideal for start-ups or small operations
- low operation costs - 1 EUR per crushed ton
- more tons per hour through XXL jaw plates
- increased revenue through cubical material
- only one operator and one excavator needed
- no disposal cost
- no transportation of material

FACTS & FIGURES

Performance.

The Rockcrusher breaks the material most efficiently at a ratio of 1:6. With the variable gap setting, the final size is determined by the user.

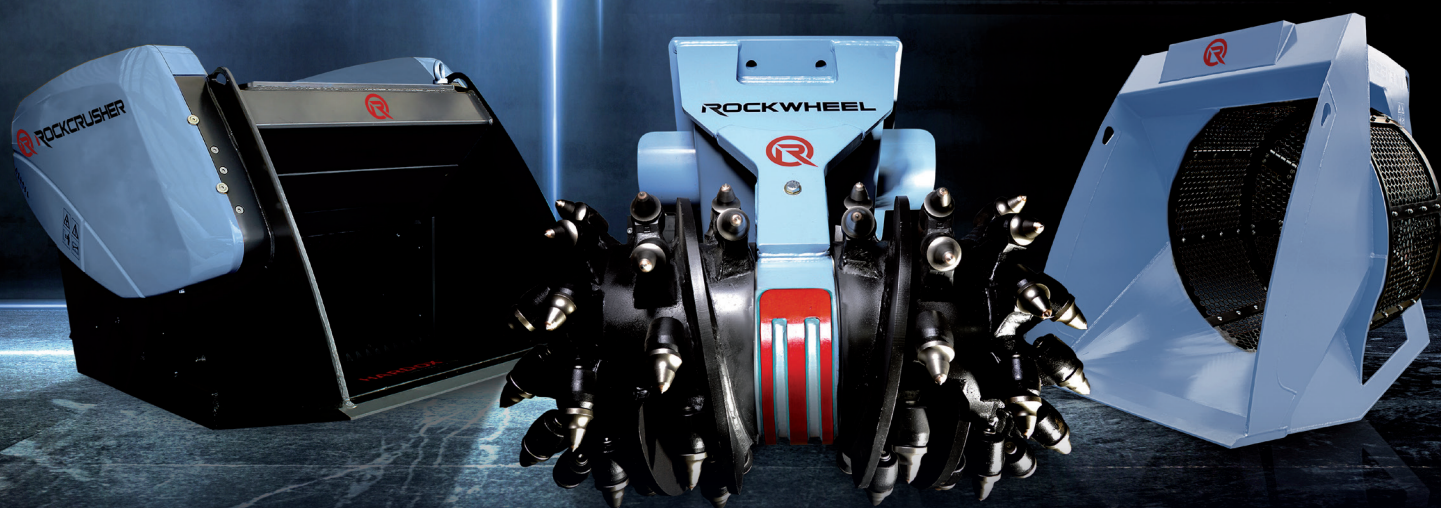
ROCKCRUSHER *



* The production capacities vary based on material, feed size and close side setting. Indicated capacities based on medium hard material crushed under optimal conditions and taking the swivel time into account.

Model	RC 7 R (HBC 650)	RC 9 R (HBC 750)	RC 11 R (HBC 950)	RC 13 R (HBC1250)
Excavator size t	≥ 12	≥ 20	≥ 25	≥ 35
Inlet opening mm	650 x 500	750 x 500	950 x 525	1250 x 570
Surface size jaw plates m ²	0,9	1,2	1,7	2,4
Gap adjustment min-max mm	10 - 100	12 - 100	12 - 100	12 - 120
Oil flow in l/min	>100	>145	>200	>290
Oil pressure in bar	220	220	220	220
Weight in kg	2000	3000	4100	6100
Length in mm	1940	2210	2350	2570
Width in mm	1100	1210	1450	1820
Height in mm	1300	1370	1390	1550





YOUR RELIABLE PARTNER



www.rock.zone

ROCK.ZONE GmbH

Sandweg 10 · 74595 Langenburg · Germany
T +49 7905 941 99 0 · info@rock.zone

May 2022: Product specifications and prices are subject to change without notice or obligation. The photographs and/or drawings contained in this document are for illustration only. Please refer to the relevant Operating Manual for instructions on the proper use of this equipment. Failure to adhere to the appropriate Operating Manual when using our products or otherwise negligent behaviour can result in serious injury or death. The standard written warranty is the only warranty that applies to our products. Rokla GmbH provides no further warranty, either expressly nor implied.